



Programs of Excellence

2024 Prospectus



A world of opportunity



Introduction

Foxwell State Secondary College is proud to offer our extra-curricular programs to enrich your learning experience and provide a world of opportunity.

Our Programs of Excellence include:

- ALP (Advanced Learning Program) Academic Excellence Program
- Creative Voices Program of Excellence
- Sporting Minds: High Performance Sports Program of Excellence
- Gen STEM (Generation Science, Technology, Engineering, Mathematics) Program of Excellence

This Prospectus provides important information about each Program of Excellence and the College's expectations of our students accepted into these programs.

Enrolment Capacity

To ensure Foxwell State Secondary College is able to meet its enrolment obligations within the Enrolment Management Plan (EMP), the Principal must restrict the enrolment of out-of-catchment students to ensure in-catchment students can enrol at their local state school.

Our Programs of Excellence are supported through a defined number of places. Programs of Excellence will only be available to out-of-catchment enrolments once the demand for in-catchment enrolment has been met and capacity for future growth has been reserved.

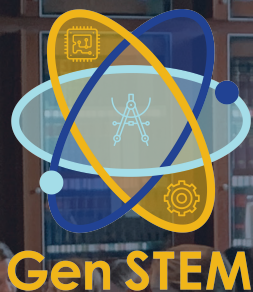
- ALP (Advanced Learning Program)
- Creative Voices
- Sporting Minds
- Gen STEM

Upon acceptance into the Program, a Program of Excellence Agreement form will be issued for review and signature by both the Student and Parent/Carer. Once the signed agreement and payment of your child's enrolment into the Program of Excellence is received, you are committing to a three or four year period (Year 7 to Year 9 or 10, depending on the Program), unless the enrolment commences in later years.

Conditions of entry

Students enrolled in Foxwell State Secondary College's Program of Excellence must pay the associated fees as outlined in their acceptance letter, or enter into a payment plan, upon commencing the program.

In addition, the Program of Excellence Acceptance Agreement document must be signed, confirming that the student and their Parent/Carer's accept the academic and behavioural expectations placed upon them for student's position in the Program..



Overview

Gen STEM (Generation Science Technology, Engineering and Mathematics) is an Excellence Program that empowers females⁺ and allows them to pursue their passion and interest across the various disciplines of Science, Technology, Engineering and Mathematics (STEM). Each student is matched with a female⁺ PhD candidate or graduate as their mentor to inspire and support them through the design, implementation and presentation of a project of their choice. Gen STEM students also have the opportunity to participate in a variety of STEM programs, excursions, workshops and competitions at a state, national and international level, whilst allowing students to engage with like-minded students across the world.

Female⁺ students with a passion for STEM will be provided with guidance, mentoring, inspiration and support from our partners including Wonder of Science, based at the University of Queensland.

⁺Individuals that identify as female or other non-binary definitions of gender.

Contacts

Program Coordinator: Nahdia McClymont e: nmccl31@eq.edu.au

Attendance

Students in this program are expected to attend a morning scheduled class between 7.45am and 8.45 am. The day allocation for these classes will be confirmed at the commencement of each school year. Attendance at this lesson is mandatory and an obligation of the program.

Year 7 and 8 students will attend an additional lesson as part of their normal weekly timetable.

Students will have the opportunity to participate in programs and activities, such as Wonder of Science, First Lego League, Horizon Educational H2GP, Up & Atom Gen STEM Fair, and ICAS testing, as a part of the course. Students are expected to fully participate in all activities and programs.

Gen-STEM students are expected to:

- Actively engage with their mentors on a regular basis throughout the design, implementation and presentation processes
- Participate in various STEM excursions, competitions and workshops as nominated by Foxwell State Secondary College
- Proudly demonstrate the Foxwell SPIRIT values in all that they do.

Levies and fees

All students are to pay \$150 levy upon accepting their offer of enrolment into Gen-STEM, which will include a Gen STEM Excellence t-shirt in the students first year of the Gen STEM program. This levy is payable each year. A one-off opportunity may present for students and this may incur an additional fee. Should this occur, Foxwell State Secondary College will communicate with students and their Parent/Carer at the earliest convenience.



Overview

Advanced Learning Program (ALP) is an advanced learning pathways program designed to engage students in higher-order, creative and lateral thinking skills and processes, problem solving and decision making.

This program places like-minded students in a challenging and rigorous environment, designed to celebrate academic excellence and enable each student to reach their full academic potential.

Students will be extended with complex challenges and appropriate degrees of independence through their personal Advanced Learning Plan.

Contacts

Program Coordinator: Danielle Goddaer e: dgodd2@eq.edu.au

Attendance

Students in this program are expected to attend a morning scheduled class between 7.45am and 8.45am. The day allocation for these classes will be confirmed at the commencement of each school year. Attendance at this lesson is mandatory and an obligation of the program.

Year 7 and 8 students will attend an additional lesson as part of their normal weekly timetabled classes.

Students will have the opportunity to participate in programs and activities, such as ICAS testing, as a part of the course. Students are expected to participate in all activities and programs.

Levies and fees

All students are to pay \$150 levy upon accepting their offer of enrolment into ALP, which will include an ALP Excellence t-shirt in the students first year of the ALP program. This levy is payable each year. A one-off opportunity may present for students and this may incur an additional fee. Should this occur, Foxwell State Secondary College will communicate with students and their Parent/Carer at the earliest convenience.

Sporting Minds



Overview

Sporting Minds is a High-Performance Sports Program, which aims to nurture and develop the physical, mental, social and emotional potential of high performing student athletes.

The program will recognise and identify emerging athletes and assist each individual in achieving excellence and success in both their chosen sport/s and academics. With the right attitude, motivation and support almost anything is possible in this program to maximise each individual's potential.

The program will focus on athlete development and will expose students to a variety of training, sports and coaches so students have multiple opportunities to build their capacity to excel in their chosen sporting areas now and in the future. Each student will have exposure and opportunity to engage with and in the development of:

- Nutrition
- Strength and Conditioning
- Recovery and Mobility
- Sports Psychology
- Wellbeing and Mindfulness
- Body Awareness
- Data and Performance
- Feedback and Communication
- Sport Exposure

Contacts

Program Coordinator: Braiden Ruge e: bruge3@eq.edu.au

Attendance

Students in this program are expected to attend a morning scheduled class between 7.45am and 8.45 am. The day allocation for these classes will be confirmed at the commencement of each school year. Attendance at this lesson is mandatory and an obligation of the program.

Year 7 and 8 students will attend an additional lesson as part of their normal weekly timetable.

Students will have the opportunity to participate in programs and activities, such as district sport, as a part of the course. Students are expected to participate in all activities and programs.

Students are required to attend at least 1 extra-curricular sporting activity throughout the year. It is also an expectation that students participate in district sport when the opportunity arises.

Levies and fees

All students are to pay \$150 levy upon accepting their offer of enrolment into Sporting Minds, which will include a Sporting Minds Excellence t-shirt in the students first year of the Sporting Minds program. This levy is payable each year. A one-off opportunity may present for students and this may incur an additional fee. Should this occur, Foxwell State Secondary College will communicate with students and their Parent/Carer at the earliest convenience.

Creative Voices



Overview

Creative Voices is an excellence program designed to engage a wide range of student voices. Students have the opportunity to create works that communicate a message to an audience and evoke emotion about the world through multiple areas of the Arts. Through genres such as dance, drama, persuasive speech, song or an artwork, students can choose their area of interest and demonstrate who they are by using their 'voice' to communicate meaning.

Through engaging in studies of various performance styles such as collage drama, public speaking, film and documentary making and musical theatre, students will have multiple opportunities to identify their strengths and extend their abilities in creating pieces that communicate their message.

Contacts

Program Coordinator: Collette Wilson e: cwils138@eq.edu.au

Attendance

Students in this program are expected to attend a morning scheduled class between 7.45am and 8.45 am. The day allocation for these classes will be confirmed at the commencement of each school year. Attendance at this lesson is mandatory and an obligation of the program.

Year 7 and 8 students will attend an additional lesson as part of their normal weekly timetable.

Students will have the opportunity to participate in programs and activities, such as showcases, excursions and workshops as a part of the course. Students are expected to participate in all activities and programs.

Students are required to attend at least 1 extra-curricular Arts activity throughout the year. It is also an expectation that students in Creative Voices perform at College events, assemblies and represent the College at specialised events.

Levies and fees

All students are to pay \$150 levy upon accepting their offer of enrolment into Creative Voices, which will include an Arts Excellence t-shirt in the students first year of the Creative Voices program, plus access to industry professional workshops and/or excursions through the year. This levy is payable each year. A one-off opportunity may present for students and this may incur an additional fee. Should this occur, Foxwell State Secondary College will communicate with students and their Parent/Carer at the earliest convenience.



Student Support

The academic success, as well as the health, safety and wellbeing of students is of paramount importance to the College. Where necessary, the College may offer support to students.

Foxwell State Secondary College offers a range of programs and services to support the wellbeing, engagement and learning of all students. We encourage parents and students to speak with their teacher, Program of Excellence Coordinator, Year Level Assistant, Head of Year, Head of Student Success, Head of Inclusion or Deputy Principal or make an appointment to meet with the Guidance Officer, if they would like individual advice about accessing particular support and services.

Learning and wellbeing are inextricably linked - students learn best when their wellbeing is optimised, and they develop a strong sense of wellbeing when they experience success. The College's Learning and Wellbeing Framework supports with creating our positive school culture and embedding student wellbeing in all aspects of school life through connecting the learning environment, curriculum and pedagogy, policies, procedures and partnerships for learning and life.

Students can approach any trusted school staff member at Foxwell State Secondary College to seek assistance or advice. If they are unable to assist, they will provide guidance and help ensure the student is connected to the appropriate representative of the Student Support Network.

The following staff are available to provide support to students. Please refer to the Student Code of Conduct for a role description of each.

- Program of Excellence Coordinator
- Year Level Assistant
- Heads of Year
- Head of Student Success
- Heads of Department
- Head of Inclusion
- Deputy Principal
- Principal
- Guidance Officer
- School Chaplain
- School Based Health Nurse
- Student Administration

Further details regarding the support available to all students can be found in our Student Code of Conduct: Student Wellbeing, Engagement and Learning.

Should students require additional support specific to the Program of Excellence, please contact the Program of Excellence Coordinator.

Expectation of academic performance

Gen STEM: Students are to achieve a B or above for academic achievement in Maths and Science. Students are to achieve a high level rating for Effort and Behaviour for all subjects.

Advanced Learning Program: Students are to achieve a B or above for academic achievement in English, Maths and Science. Students are to achieve a high level rating for Effort and Behaviour for all subjects.

Sporting Minds: Students are to achieve a satisfactory level or above of academic achievement in all subjects. Students are to achieve a satisfactory or above for Effort and Behaviour in all subjects.

Creative Voices: Students are to achieve a B or above for academic achievement in at least two Arts subjects (Dance, Drama, Media or Visual Arts). Students are to achieve a high level rating for Effort and Behaviour for all subjects.

All students will engage in extra-curricular and co-curricular activities afforded to them, as part of their position in the Program of Excellence. Exemptions from such activities will only occur after thorough negotiation between parent/guardian and Program of Excellence Coordinator.

Expectation of student conduct

Foxwell State Secondary College expects students enrolled into one of the Programs of Excellence model the positive behaviours as outlined in the *Student Code of Conduct* and other school policies, in the spirit of the College and communities values and expectations.

Supporting Student Performance

In the event that a student's conduct or academic performance is not to the standard as set out above, the College will undertake the following steps:

- **Identify at-risk students**

The Program of Excellence Coordinator will review the academic performance and student conduct of the students within their Program and within other related subjects. Students will be identified if they are not performing to the agreed standard.

- **Verbal Warning**

This is a verbal warning from the Program Coordinator to the student or their parent/guardian.

- **Formal Meeting and At-risk Student Improvement Plan development**

The Program of Excellence Coordinator meets with the student and their parent/guardian at an At Risk Interview to discuss the concerns for the student's performance. At the meeting, an *At-risk Student Improvement Plan* is developed outlining agreed actions to support the student to improve for a set period of time. A copy of the Plan is provided to the student.

- **Checkpoint meetings**

Meetings will be arranged between all parties during the Term to monitor and support the student. An *At-risk Record of Conversation* will be completed at this time.

- **Student returns to Program of Excellence**

Should academic performance and behaviour improve by the due date identified in the student's *At-risk Student Improvement Plan*, the student would retain their position in their Program of Excellence.

- **Removal of student from the Program of Excellence**

Should academic performance and behaviour NOT improve by the due date identified in the student's *At-risk Student Improvement Plan*, a meeting will be arranged between all parties to notify the student and parent/guardian of the student's removal from the Program of Excellence.

The student may receive a new timetable to commence in the following Term. Other consequences may apply in line with the *Student Code of Conduct*.